

Sorong-Sorong On MSY Seahorse

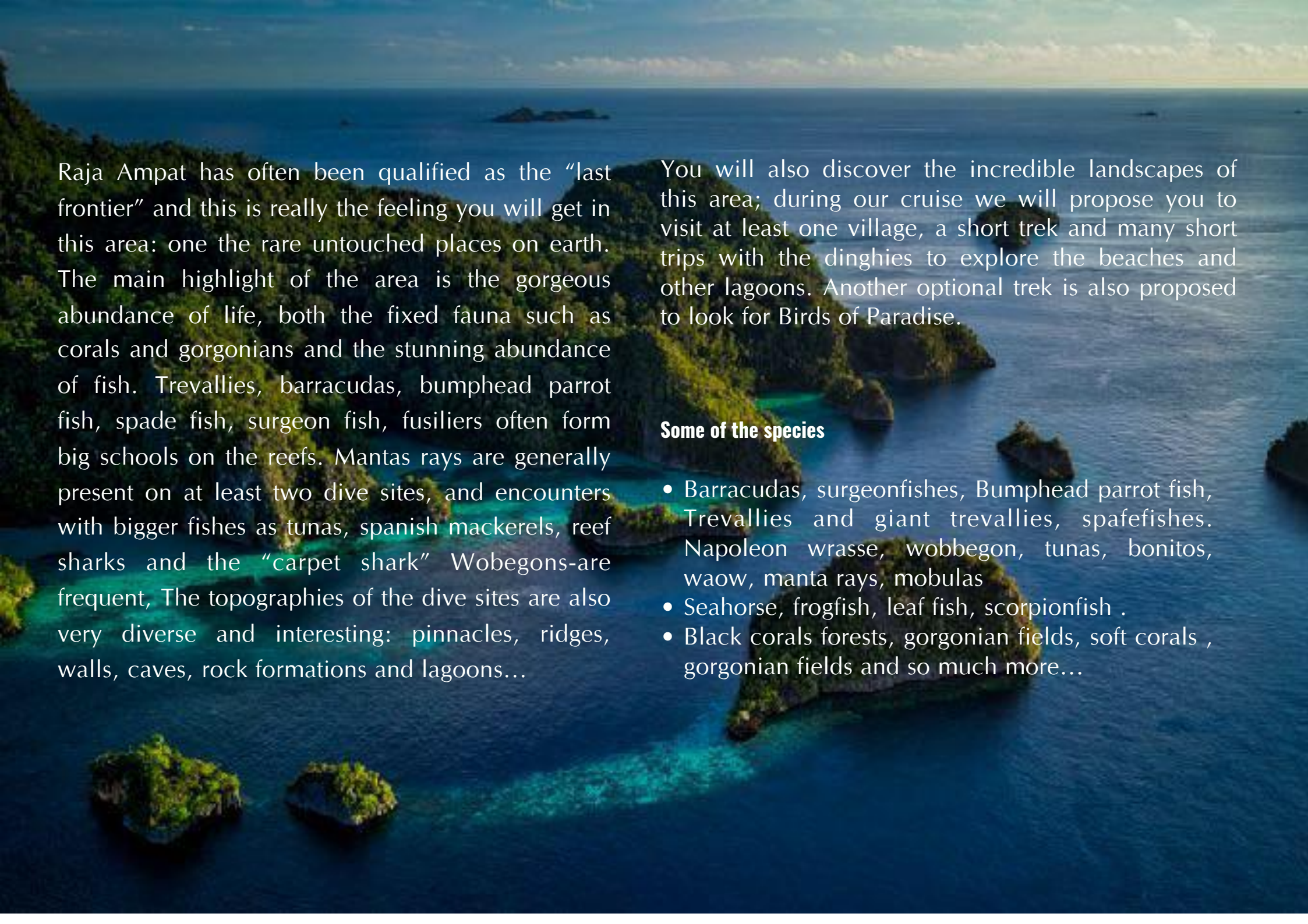


WALLACEA
DIVE CRUISES



- ✓ GREAT COMFORT, LARGE CABINS
- ✓ OPTIMAL DIVING EXPERIENCE
- ✓ FRIENDLY ATMOSPHERE
- ✓ DELICIOUS CUISINE
- ✓ FREE NITROX



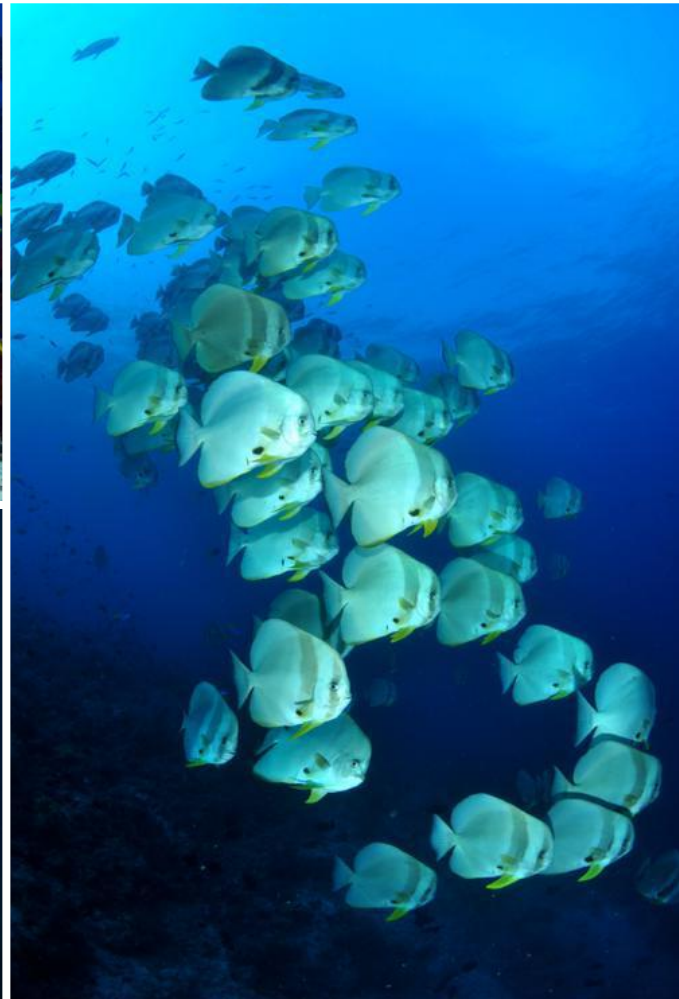
An aerial photograph of a tropical coastline. The image shows several small, lush green islands and peninsulas jutting into a deep blue ocean. The water near the shore is a vibrant turquoise, indicating a shallow reef flat or lagoon. The sky is a pale blue with some light clouds. The overall scene is serene and beautiful, showcasing the natural beauty of Raja Ampat.

Raja Ampat has often been qualified as the “last frontier” and this is really the feeling you will get in this area: one the rare untouched places on earth. The main highlight of the area is the gorgeous abundance of life, both the fixed fauna such as corals and gorgonians and the stunning abundance of fish. Trevallies, barracudas, bumphead parrot fish, spade fish, surgeon fish, fusiliers often form big schools on the reefs. Mantas rays are generally present on at least two dive sites, and encounters with bigger fishes as tunas, spanish mackerels, reef sharks and the “carpet shark” Wobegons-are frequent, The topographies of the dive sites are also very diverse and interesting: pinnacles, ridges, walls, caves, rock formations and lagoons...

You will also discover the incredible landscapes of this area; during our cruise we will propose you to visit at least one village, a short trek and many short trips with the dinghies to explore the beaches and other lagoons. Another optional trek is also proposed to look for Birds of Paradise.

Some of the species

- Barracudas, surgeonfishes, Bumphead parrot fish, Trevallies and giant trevallies, spafefishes. Napoleon wrasse, wobbegon, tunas, bonitos, waow, manta rays, mobulas
- Seahorse, frogfish, leaf fish, scorpionfish .
- Black corals forests, gorgonian fields, soft corals , gorgonian fields and so much more...



Itinerary & Navigation

Beside is a map showing the cruise itinerary. The itinerary varies slightly between each cruise depending on weather conditions, currents, visibility and tides. Distances are relatively short: only two full nights of navigation, the others taking place between dives or in early morning. See the full program [here](#).

Weather

The weather is rather variable; even if it is the "dry" season in this region can be expected to rainfall showers. Temperatures is around 30 °C. Generally calm sea with a few temporary storms; slight swell in the most northern part.

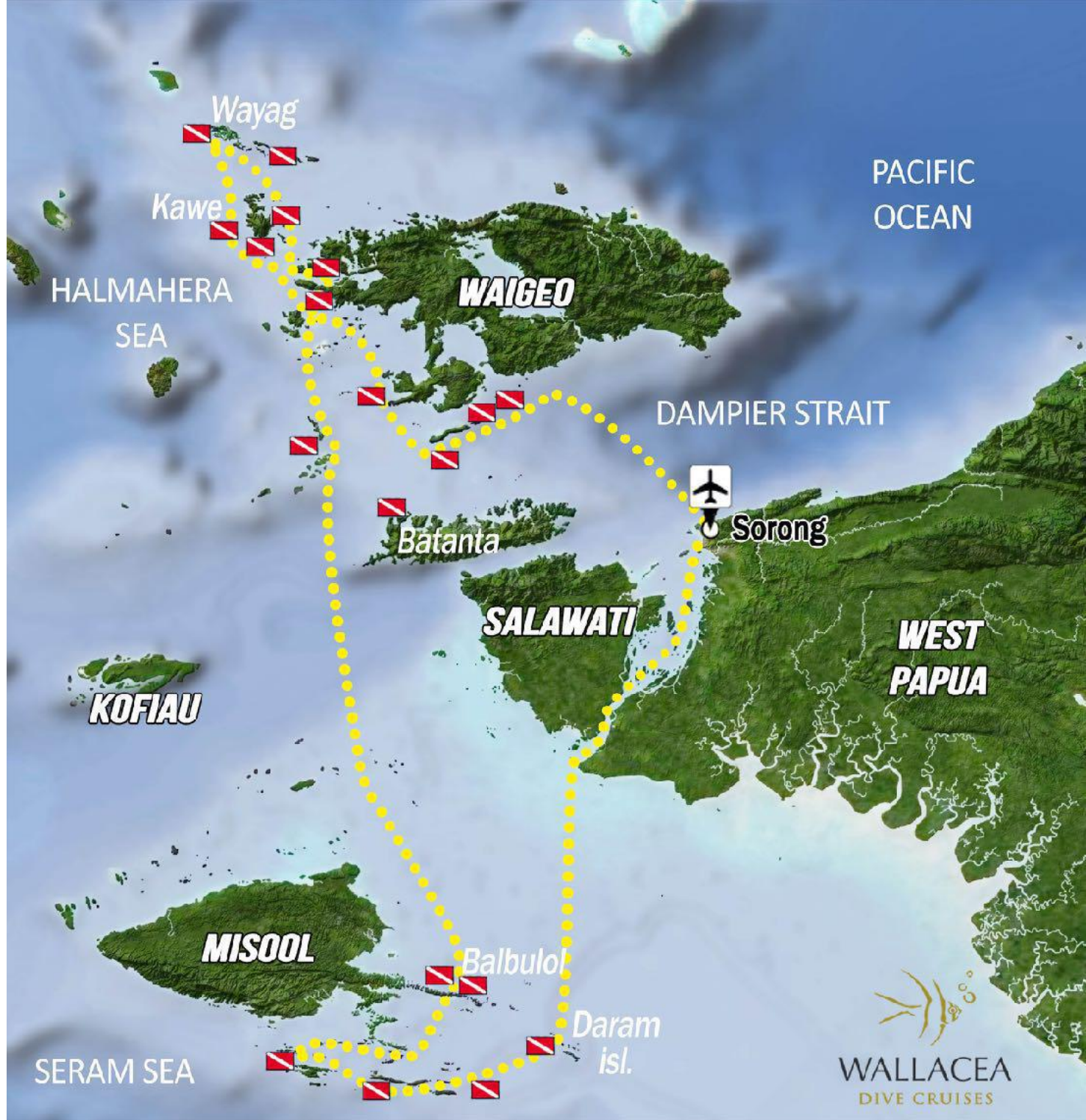
Misool and Dampier

Excellent for the wide angle, undersea life, mantas, lots of fishes... Very colourful soft corals and gorgonas fields. Macro subjects nonetheless with many small seahorses.

Inconvenience of the area, visibility is sometimes limited near Misool.

The north

The landscape of the small islands there is remarkable. Underwater life is less spectacular than in the South. Many fishes also.. Kawe is excellent. Great macro in Aljui bay.



Flights to reach the departure of the cruise in Sorong

Our « Raja Ampat » cruise departures are from Sorong, little costal city on the North West part of the Indonesian Papua. That city is well served with some daily flights from the main International Indonesian Airports such as Jakarta, Manado, Makassar and Denpasar.

Except Garuda Indonesia the 2 major Airlines that serve Sorong (Sriwijaya, Nam Air) are black-listed by the European Community: therefore from our experience both are reliable. Wallacea Dive Cruise can assist you for the purchasing of your domestic flights or even can buy them for you for your safety.

For your International flight to Jakarta we recommend Emirates with its EK 356 flight landing at Jakarta airport (the day before the departure of your cruise) at 15:40. Return the last day of the cruise + 1 with EK 357 at 00:15. At jakarta airport, you'll be landing and taking off at Terminal 3 Ultimate.



VIA JAKARTA (SORONG IS JAKARTA TIME + 2)

AIRWAYS	JAKARTA-SORONG	RATE	SORONG-JAKARTA	RATE	LUGGAGES
 Garuda Indonesia The Airline Of Indonesia	00:20 - 06:35 (direct flight)	€290	08:25 - 10:05 (direct flight) 14:35 - 18:40 (Via Makassar)	€290	20 kg (+23 kg)
 Batik air	00:05 - 07:10	€220	14:05 - 17:15 (short transit- Eco)	€220	20 kg (+3€/ Kg above)

NB shall you wish to fly direct flight only, it is perfectly possible to outbound with one airline and come back with another one at no extra charge.

VIA MANADO (SERVE FROM BY SINGAPORE AIRLINES & SILKAIR)

AIRWAYS	DAYS	MANADO-SORONG	DAYS	SORONG-MANADO	RATE ONE WAY	LUGGAGES
 Garuda Indonesia The Airline Of Indonesia	Daily	06:00-08:30	Daily	14:15-14:40	€110	20 kg (+23 kg)
 Lion Air	Daily	0815:50-10:30	1-3-5 2-4	06:00-06:50 09:25-10:15	€95 €185	10 kg (+2€/ Kg above)

VIA BALI (SORONG IS BALI TIME + 1)

AIRWAYS	DAYS	DENPASAR - SORONG	SORONG-DENPASAR	RATE RETURN	LUGGAGES
 Sriwijaya Air Your Flying Partner	Daily	16:55-06:30 (transit de 09h10 à Makassar)	10:45-15:25	€275	20 kg (+10 kg)
 Garuda Indonesia The Airline Of Indonesia	Daily	17:30-06:45 (10h40 transit in Makassar)	14:35-21:00	€380	20 kg (+23 kg)

Transfer from a Terminal to another (Jakarta airport)

At Jakarta Airport, International flights land at Terminal 3 Ultimate. Unless you fly Garuda Indonesia, you'll have to change Terminal. To do so you can use either the free shuttle (bus in service till 22 :00) or a taxi. Illegal taxi drivers might harass you: please don't pay attention to them and just make a right to the location you'll find the officials' (Blue Bird, Silver bird, Express, Taxiku, Gamma).

Airlines	Terminal
 Garuda Indonesia <i>The Airline Of Indonesia</i>	3U
 Sriwijaya Air <i>Your Flying Partner</i>	2F
 Batik air	1C

Important

Excess baggage charge have to be settled in cash and in local currency (rupiah) only. Please exchange a sufficient amount of cash at your arrival at the airport. You can do so either at « moneychangers » or at the ATM machines.

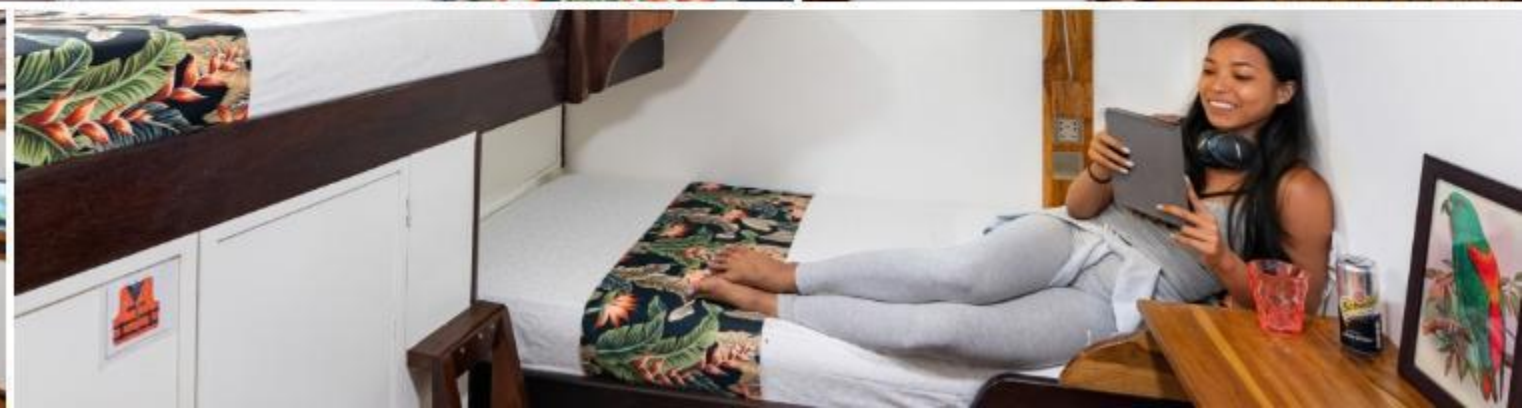
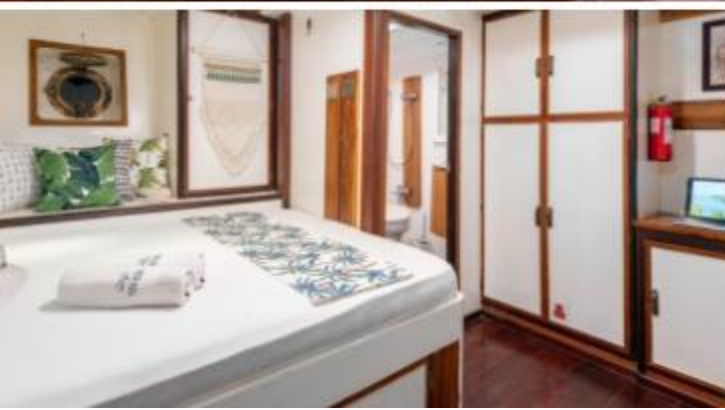
Flight delays are extremely frequent: please keep a minimum of 6 hours between 2 flights when flying in Indonesia. Wallacea dive Cruises will be in charge of your transfers from the closest airport to the boat before the departure of your cruise and return.

SEA HORSE: Boat specifications

8 air-conditioned Cabins with ensuite bathroom and hot water

- * 33 m x 8,5 m
- * 16 divers
- * 12 crew members - 4 dive guides - 1 cruise director-diving instructor

- * 5 cabins with TWIN beds, lower deck
- * 1 cabins with DOUBLE bed + 1 TWIN bed, lower deck
- * 2 cabins with DOUBLE bed "Sea view", main deck











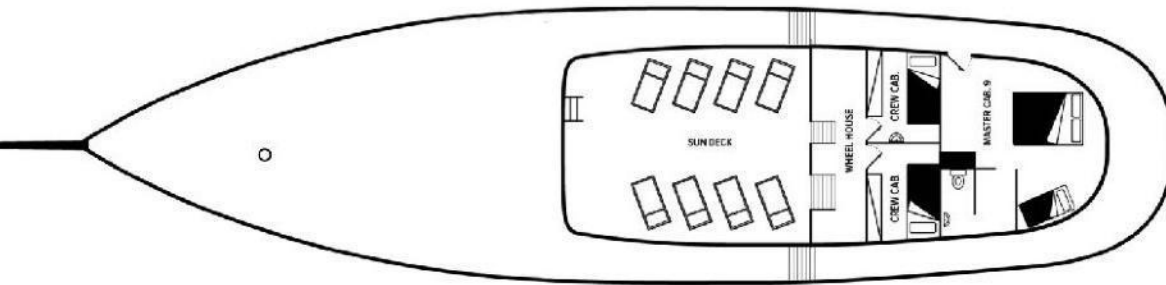


NAME	NO	GUIDE	GROUP	DATE
MARKET	1	Bob		
JOHN	2		1	1
JOHN	3			
JOHN	4			
JOHN	5			
JOHN	6			
JOHN	7			
JOHN	8			
JOHN	9			
JOHN	10			
JOHN	11			
JOHN	12			
JOHN	13			
JOHN	14			
JOHN	15			
JOHN	16			
JOHN	17			
JOHN	18			
JOHN	19			
JOHN	20			
JOHN	21			
JOHN	22			
JOHN	23			
JOHN	24			
JOHN	25			
JOHN	26			
JOHN	27			
JOHN	28			
JOHN	29			
JOHN	30			
JOHN	31			
JOHN	32			
JOHN	33			
JOHN	34			
JOHN	35			
JOHN	36			
JOHN	37			
JOHN	38			
JOHN	39			
JOHN	40			
JOHN	41			
JOHN	42			
JOHN	43			
JOHN	44			
JOHN	45			
JOHN	46			
JOHN	47			
JOHN	48			
JOHN	49			
JOHN	50			
JOHN	51			
JOHN	52			
JOHN	53			
JOHN	54			
JOHN	55			
JOHN	56			
JOHN	57			
JOHN	58			
JOHN	59			
JOHN	60			
JOHN	61			
JOHN	62			
JOHN	63			
JOHN	64			
JOHN	65			
JOHN	66			
JOHN	67			
JOHN	68			
JOHN	69			
JOHN	70			
JOHN	71			
JOHN	72			
JOHN	73			
JOHN	74			
JOHN	75			
JOHN	76			
JOHN	77			
JOHN	78			
JOHN	79			
JOHN	80			
JOHN	81			
JOHN	82			
JOHN	83			
JOHN	84			
JOHN	85			
JOHN	86			
JOHN	87			
JOHN	88			
JOHN	89			
JOHN	90			
JOHN	91			
JOHN	92			
JOHN	93			
JOHN	94			
JOHN	95			
JOHN	96			
JOHN	97			
JOHN	98			
JOHN	99			
JOHN	100			

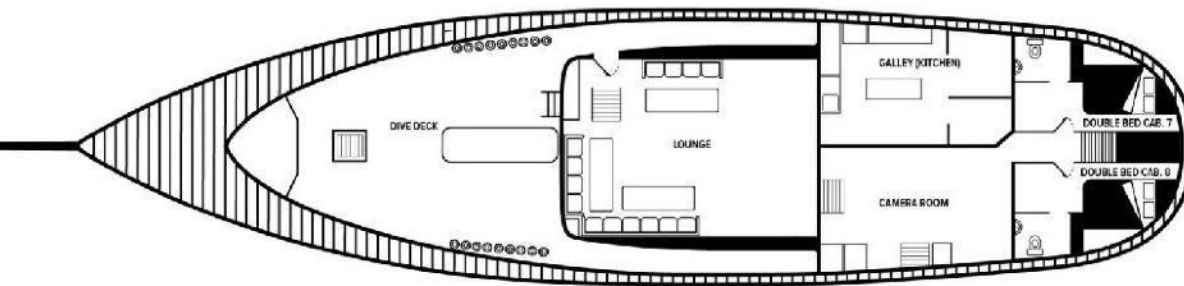


Layout of the Boat

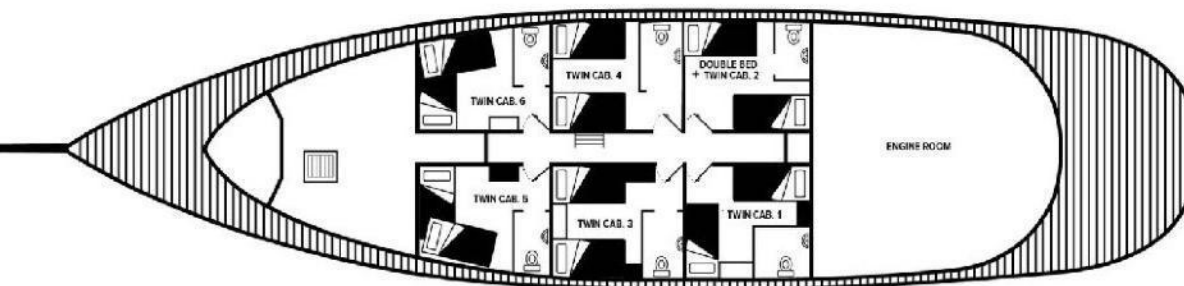
UPPER DECK



MAIN DECK



LOWER DECK



The team at your service

12 crew members
4 dive guides
1 skipper / diving instructor

Technical part

Engine:	M.A.N. 2866 LXE Marine Turbo Diesel
400 HP	
Generators:	1 x Mitshubishi 40 KVA 220-380 v 1 x Mitshubishi 60 KVA 220-380 v 1 x Yammar 22 KVA 220-380 v
Fresh water:	11,000 litres of fresh water storage, 6,000 litre
Compressors :	2x Bauer Mariner HP breathing air compressors 1x CompAir Low pressure Screw Compressors with membrane for NITROX
Navigation:	EPIRB emergency locator,, Furuno 90 NM radar, 2 x GPS w/Plotter and Depth Sounder Furuno
Communication:	Sat-phone, FM & SW Radio, 4 VHF and SSB Radio
Dinghies:	Two 6.5 meter Aluminium boats equipped with 100 HP Yamaha 4 strokes engines, VHF radios and depth sounders

During your cruise you will perform a minimum of 30 dives:

- * 1 dive-guide/ 4 divers maximum (4 guides/16 divers)
- * Free nitrox for certified divers (possibility of certification on board: 150 €/certification)
- * 3 fibreglass tenders
- * Our great crew at your service to carry your tank and gear
- * 1 personal towel for your return from diving



Currents

Currents are constant on a number of dives while some others are really quiet. Some dives on reefs or pinnacles have to be done on the current exposed side in order to enjoy the best fish life and can therefore be slightly "sporty". Our dive guides always check the current before the dive and will inform you of the conditions. A reef hook is recommended.

Diving

Visibility

Raja Ampat's waters are dense and visibility can rapidly change. Commonly you can see 20 meters away, but visibility can diminish in certain areas or punctually.

Temperature of the water

The temperature is all year long between 29° and 31° C. Long wetsuit 3 mm is recommended.



Diving organisation on MSY SEAHORSE

Number of dives (minimum 30)

- No diving the day of departure
- 3 dives / day every day of the cruise - one dive is usually sacrificed for land excursion to Wayag-, and another one eventually for the Bird of paradise excursion.
- 6 Night dives.
- 1 dive the day before disembarking, maybe 2 according to your flight schedule (24h/No FLY).

Schedule & standards

- | | |
|--------------------------|--------------------------------|
| • 1st dive:.....07:00am | • Dive time: 60 minutes |
| • 2nd dive: 10:30am | • Maximum Depth : 35 meters |
| • 3rd dive:02:30pm | • Dives into the safety curves |
| • Night dive: 06:30pm | • Bearing systematic security |

Due to the large number of dives and the remoteness of the location, we urge divers to stay within the safety curve, to comply with a maximum depth of 35 meters, and to systematically perform a safety stop.

Depending on the guests dive experience, aspirations (photography, macro, etc), and eventual use of nitrox (free for certified divers), the cruise director will arrange the diving groups. These groups are made up of four divers and a dive guide. The dive guides are rotating on a daily basis. Each diver is given a dive tank (DIN & INT available, no need for adapters) and a single location for the duration of the cruise.

A briefing will be conducted by the director of cruises or one of the guides before each dive. It will provide guidance on the site topography, depths, currents and potential hazards, as well as on marine life and the species represented.

The staff carries your tank between the MV Ambai and the dinghies and back. to the dinghies, tanks are disposed in slots and the guide will help you to gear just before to roll back for the dive. Identification books of flora and local fauna are available on board, and the dive guides or the skipper will always help you to identify the strange animal you just saw underwater!

* There are some dive equipment to rent on board: However, all sizes are not necessarily available, so please book for it before the cruise.

* Our cruises are open to divers Padi Advanced Level 2 or equivalent with at least 50 dives logged. Less experienced divers can also participate with a specific supervision that have to be arranged before the cruise.

* An insurance covering medical evacuation and diving accidents is highly recommended. We will request the participants to fill up on board a statement of fitness for the dive activities.

*We will ask you to carefully respect the fauna and flora: have adequate buoyancy to avoid touching the substrate or break any corals; do not touch the animals, do not collect anything; do not to harass wildlife to photography and moderate the number of flashes you impose on them. The use of gloves is not allowed.

*The divers should always carry a marker buoy.

*Thank you to read our rules of diving [here](#). By booking a cruise with Wallacea you agree with these few basic rules.

The cruise rate

Includes

- Accommodation in a shared twin or double cabin.
- All meals & snacks. Drinking water, soft drinks and hot drinks, espresso.
- All guided dives (1 guide / 4 divers maximum)
- Nitrox
- Aluminium tanks (12 lts), weights and belts
- Airport-boat transfers from/to the closest airport (departure and arrival).

Doesn't include

- Raja Ampat park and Port fees: 200 € (to be settled cash on board)
- International and domestic flights
- Double cabin "sea view" (supplement: 20€/night/pax)
- Alcoholic beverages (you can BYOB)
- Diving equipment rental (see pricing below)
- 100 cf (15 litre) tanks : 65 € / cruise
- Crew gratuities
- Massage

Good to know

- All extras are payable in cash on board. We can not receive payment by credit card.
- Currencies accepted on board: €, USD, CHF, IDR.
- Tipping: they reflect your level of satisfaction with the service on board. As an indication in the area , this is 5%-10% of the cruise rate.
- Provided on board: towels and toiletries, soap, shampoo and toothpaste.
- Electrical outlets round European type.
- Room for storage and loading photos / videos and accessory devices with many outlets. Taken in the cabins and bathrooms also. Hair dryer available on request.
- Available on board: rods and hooks in stainless, € 10
- 2 complimentary Kayaks

**YOUR PASSPORT VALIDITY MUST BE AT LEAST 6 MONTHS
AFTER THE SCHEDULED RETURN DATE**

ADDITIONAL INFORMATION

Plan to extend your journey after the cruise?

Our last project **TOMPOTIKA DIVE LODGE**, intimate resort in East Sulawesi is made for you!

6 bungalows by the sea and amazing dives!

**-10% on our packages if your stay is just before/
after your cruise !**



Visa

Since May 2016, nationals from 169 countries are dispensed of visa and can enter the Indonesian territory for a maximum of 30 days (not renewable). You can check the list of these countries by following this link

<http://www.topbali.com/indonesia-visa/>

Insurance

An insurance covering medical evacuation and diving accidents is compulsory. It will be requested upon arrival on board.

Check in - Check out

- Check in the day of the cruise start and check out at the end of it, before 1pm.

Diving equipment rental rate

• Complete regulator with octopus and pressure gauge	10€/ day
• BCD	10€/ day
• Wetsuit	10€/ day
• Torch	10€/ day
• Dive Computer	10€/ day
• Fins	5€/ day
• Diving mask	5€/ day

SCHEDULE CRUISES

NOV-APRIL
Raja-Ampat

APRIL-MAY
Halmahera

JUL
Wakatobi

AUG-SEP
Komodo

SEPT-OCT
Banda Sea

OCT- NOV
ROF- Triton Bay



To contact us

Mobile Serge: +62 812 8616 6630 (whatsApp / SMS)

Mobile Akim: +62 812 3933 2224 (whatsApp / SMS)

Mobile Jerome: +62 812 4494 2028 (whatsApp / SMS)

Skype: [live:info_635824](https://www.skype.com/user/info/635824)

Office Jakarta: +62 21 7500 577