


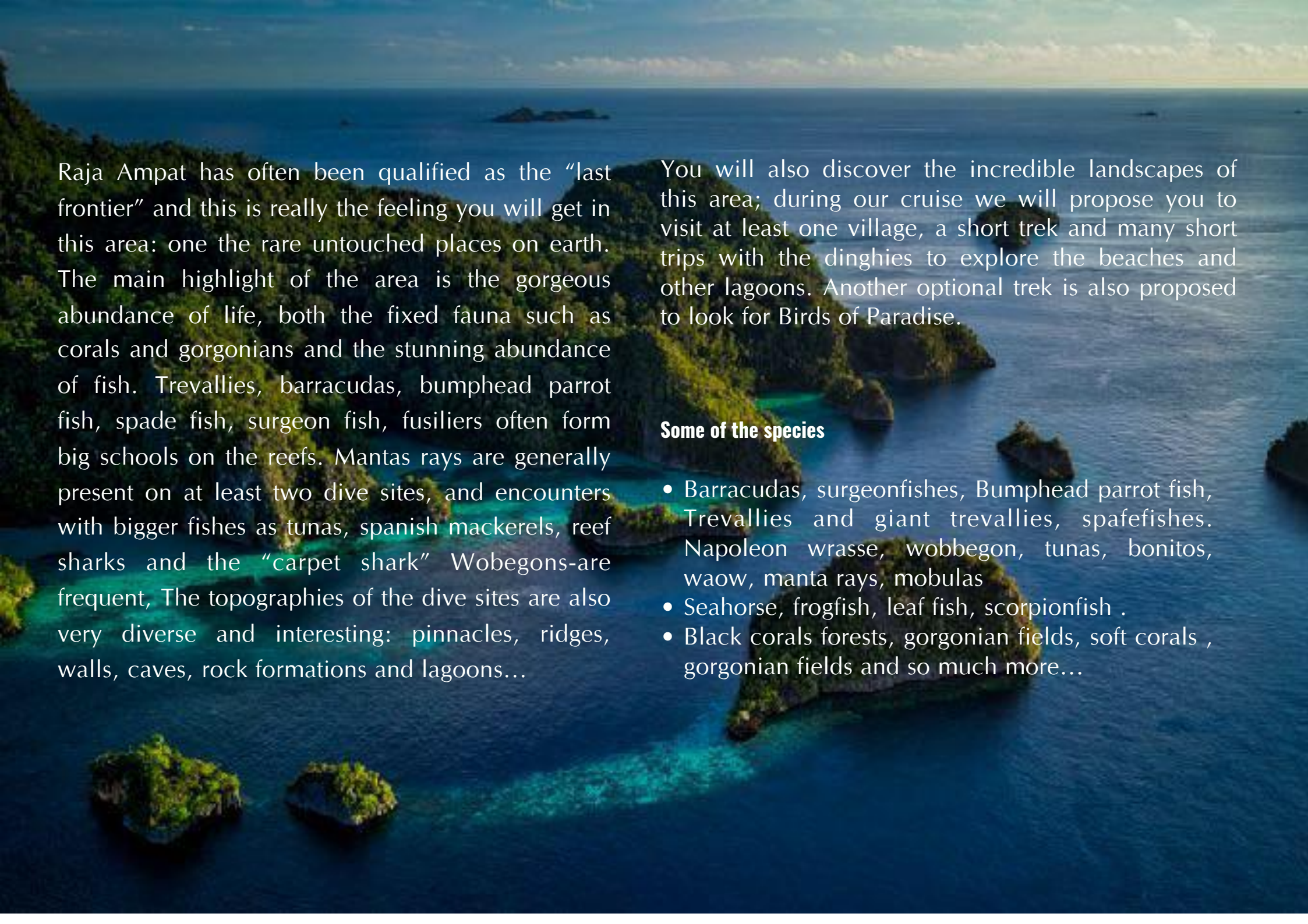
SORONG-KAIMANA CRUISE ON MSY SEAHORSE


WALLACEA
DIVE CRUISES

- ✓ GREAT COMFORT, LARGE CABINS
- ✓ OPTIMAL DIVING EXPERIENCE
- ✓ FRIENDLY ATMOSPHERE
- ✓ EXCELLENT FOOD
- ✓ FREE NITROX





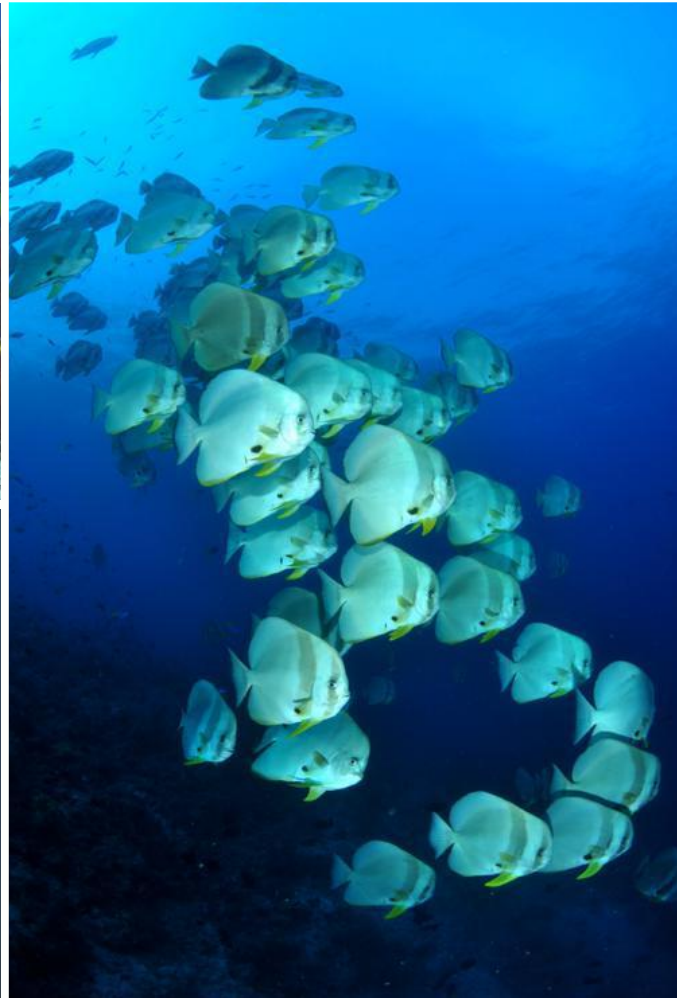
An aerial photograph of a tropical coastline. The image shows several small, lush green islands and peninsulas jutting into a deep blue ocean. The water near the shore is a vibrant turquoise, indicating a shallow reef flat or lagoon. The sky is a pale blue with some light clouds. The overall scene is serene and beautiful, showcasing the natural beauty of Raja Ampat.

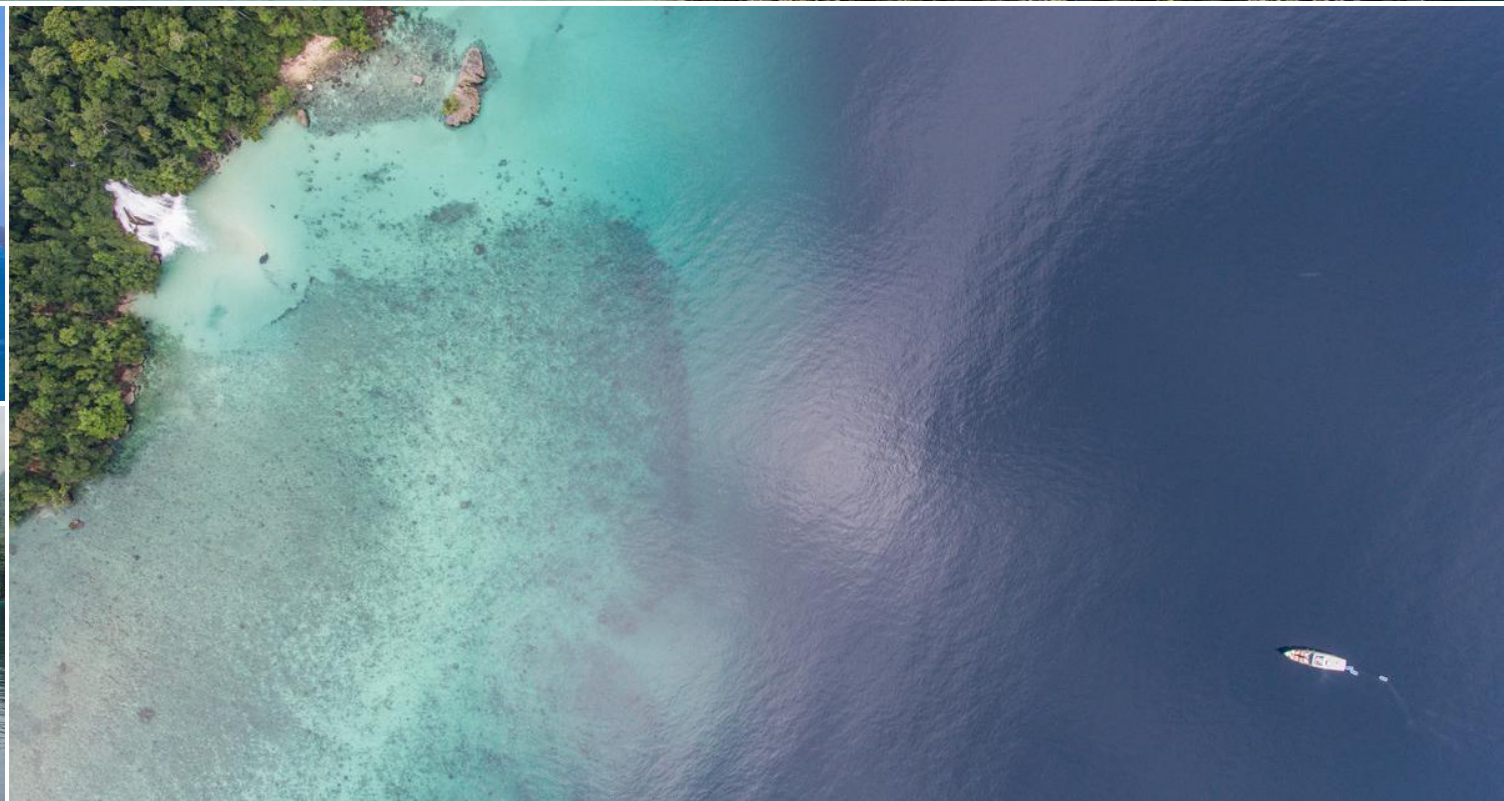
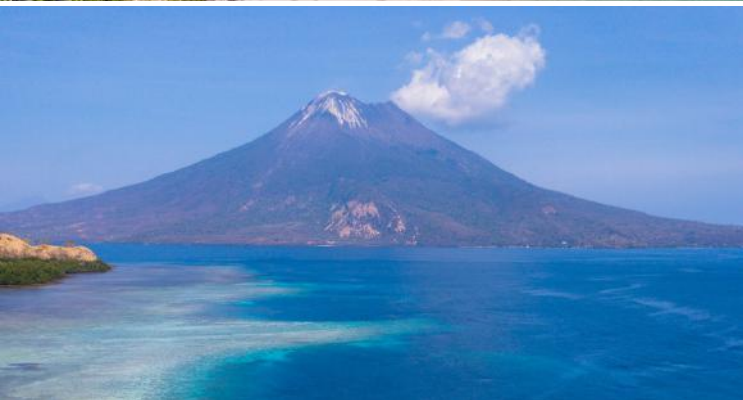
Raja Ampat has often been qualified as the “last frontier” and this is really the feeling you will get in this area: one the rare untouched places on earth. The main highlight of the area is the gorgeous abundance of life, both the fixed fauna such as corals and gorgonians and the stunning abundance of fish. Trevallies, barracudas, bumphead parrot fish, spade fish, surgeon fish, fusiliers often form big schools on the reefs. Mantas rays are generally present on at least two dive sites, and encounters with bigger fishes as tunas, spanish mackerels, reef sharks and the “carpet shark” Wobegons-are frequent, The topographies of the dive sites are also very diverse and interesting: pinnacles, ridges, walls, caves, rock formations and lagoons...

You will also discover the incredible landscapes of this area; during our cruise we will propose you to visit at least one village, a short trek and many short trips with the dinghies to explore the beaches and other lagoons. Another optional trek is also proposed to look for Birds of Paradise.

Some of the species

- Barracudas, surgeonfishes, Bumphead parrot fish, Trevallies and giant trevallies, spafefishes. Napoleon wrasse, wobbegon, tunas, bonitos, waow, manta rays, mobulas
- Seahorse, frogfish, leaf fish, scorpionfish .
- Black corals forests, gorgonian fields, soft corals , gorgonian fields and so much more...







An amazing ride with the dinghies into the channels between forest covered quartz islets will allow us to hear and see cacatoes and hornbills while turtles and rays are into just about 2 meters of water. We will also observe an impressive display of primitive rock arts on a cliff. Leaving Triton bay and crossing to Misool, we will dive the small archipelago of Pisang islands (walls, pinacles, numerous eagle and marble rays) before to reach Misool where stand the most beautiful dives of Raja Ampat.



Our cruises including Triton Bay & Misool offer some of the most beautiful dives in Indonesia with an incredible diversity. There are an interesting alternative for the divers who already dove the Raja Ampat.

In Triton Bay, the black coral forests, the incredible giant soft corals reaching up to the surface, and the abundance of critters will delight the most demanding divers. The ice on the cake are the whale sharks that stay under the fishing plateforms called "bagans".



Some of the species:

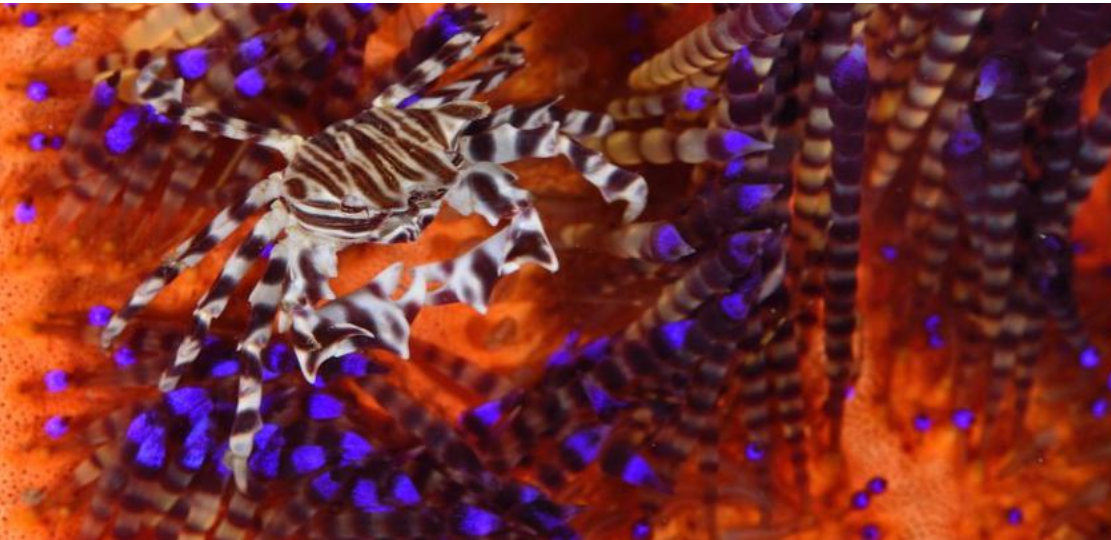
- Whale sharks, Barracudas, Surgeonfishes, Bumphead parrot fishes, Trevallies and giant trevallies, spadefishes, Napoleon wrasse, wobbegongs, tunas, bonitos, manta rays, marble rays eagle rays, mobulas, walking sharks, zebra sharks, etc..
- Seahorse, frogfish, leaf fish, scorpionfish, ghost pipe fish, coleman shrimps, etc...

- Black corals forests, gorgonian fields, soft corals , gorgonian fields,

During your cruise you will perform **a minimum of 33 dives with:**

- * 1 dive-guide/ 4 divers maximum (4 guides/16 divers)
- * Free nitrox for certified divers (possibility of certification on board)
- * 3 fibreglass tenders
- * Our great crew is at your service to carry your tank and gear

DIVING



Visibility

The average visibility is 15-20 meters but may be lower in some specific areas or for short periods.

Temperature

Water temperature is 28-29 °C in the all area.

Currents

Currents can be significant on a number of dives while some others are really quiet. Some dives on reefs or pinnacles have to be done on the current exposed side in order to enjoy the best fish life and can therefore be slightly "sporty". Our dive guides always check the current conditions before the dive and will inform you of the conditions. A reef hook is recommended.



Flights to reach the departure of the cruise in Sorong

Our « Raja Ampat » cruise departures are from Sorong, little costal city on the North West part of the Indonesian Papua. That city is well served with some daily flights from the main International Indonesian Airports such as Jakarta, Manado, Makassar and Denpasar.

Except Garuda Indonesia the 2 major Airlines that serve Sorong (Sriwijaya, Nam Air) are black-listed by the European Community: therefore from our experience both are reliable. Wallacea Dive Cruise can assist you for the purchasing of your domestic flights or even can buy them for you for your safety.

For your International flight to Jakarta we recommend Emirates with its EK 356 flight landing at Jakarta airport (the day before the departure of your cruise) at 15:40. Return the last day of the cruise + 1 with EK 357 at 00:15. At jakarta airport, you'll be landing and taking off at Terminal 3 Ultimate.



Domestic flights (international airport recommended: Jakarta)

From Jakarta to Sorong (Sorong is Jakarta time + 2):

AIRWAYS	Jakarta-Sorong	RATE	LUGGAGE
 Garuda Indonesia <i>The Airline Of Indonesia</i>	00:20 - 06:35	€290	20 kg (+23 kg)
 Batik air	00:30 - 06:30	€220	20 kg (+3€/ Kg above)

From Kaimana to Jakarta (Kaimana is Jakarta time + 2)

AIRWAYS	Kaimana-Sorong	RATE	LUGGAGE
 Lion Air	12:20 - 17:15	€310	20kg (+2 euros/additional kg)

Although the hand luggage shouldn't be weighed, it is recommended to stay in a reasonable range (hand luggage standard : 7 kg).

NB: air fares need to be confirmed at the time of booking.

Navigation and itinerary

Hereunder: the route of the cruise. This one slightly varies between each cruise depending on weather conditions, currents, visibility and diving. See the full program [here](#).

This is the perfect cruise to fully enjoy East Indonesia's finest marine biodiversity. In this program we take you not only to dive the world famous Raja Ampat, but also to explore West Papua further south in Triton Bay in Kaimana district.

The beauty of its amazing soft corals that stick out to the surface is definitely one of the major marine attractions in Triton Bay. There are over 959 different kinds of coral fish and 471 known types of coral in this area. The other highlights include black coral forests, overflowing schools of sweetlips, vibrant macro lives, and a good chance to encounter whale sharks on "bagans"—the fishing platforms where these giants come to visit from time to time.

The other part of the cruise will allow you to discover or rediscover Misool with its magnificent reefs that are certainly among the most beautiful reefs in the world.

Weather

The weather is rather variable; even if it is the "dry" season in this region can be expected to rainfall showers. Temperatures of about 30 ° C. Generally calm sea with a few temporary storms. Slight swell in the most northern part.



Transfer from a Terminal to another (Jakarta airport)

At Jakarta Airport, International flights land at Terminal 3 Ultimate. Unless you fly Garuda Indonesia, you'll have to change Terminal. To do so you can use either the free shuttle (bus in service till 22 :00) or a taxi. Illegal taxi drivers might harass you: please don't pay attention to them and just make a right to the location you'll find the officials' (Blue Bird, Silver bird, Express, Taxiku, Gamma).

Airlines	Terminal
 Garuda Indonesia <i>The Airline Of Indonesia</i>	3U
 Sriwijaya Air <i>Your Flying Partner</i>	2F
 Batik air	1C

Important

Excess baggage charge have to be settled in cash and in local currency (rupiah) only. Please exchange a sufficient amount of cash at your arrival at the airport. You can do so either at « moneychangers » or at the ATM machines.

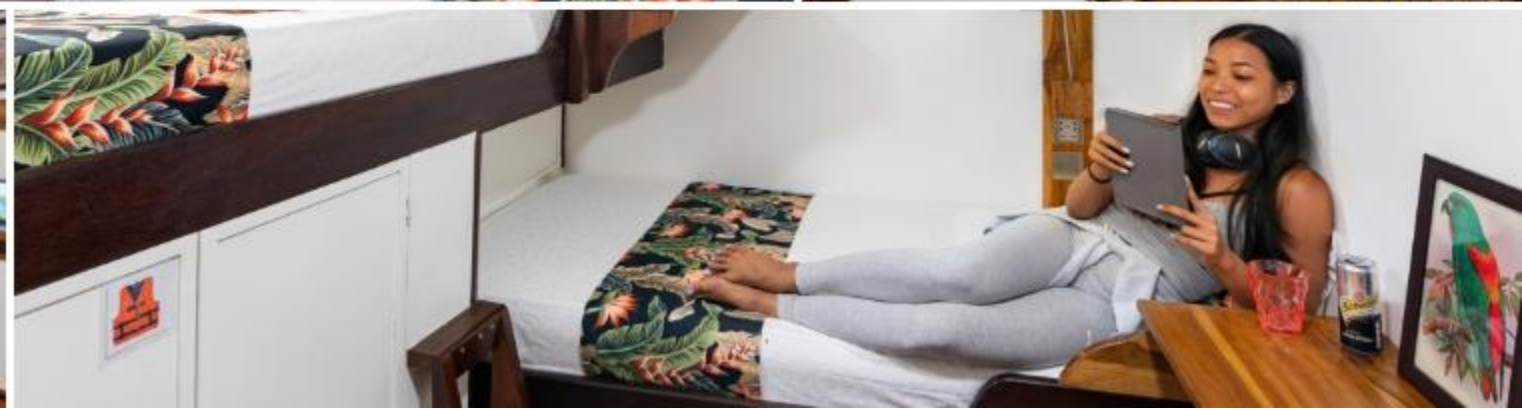
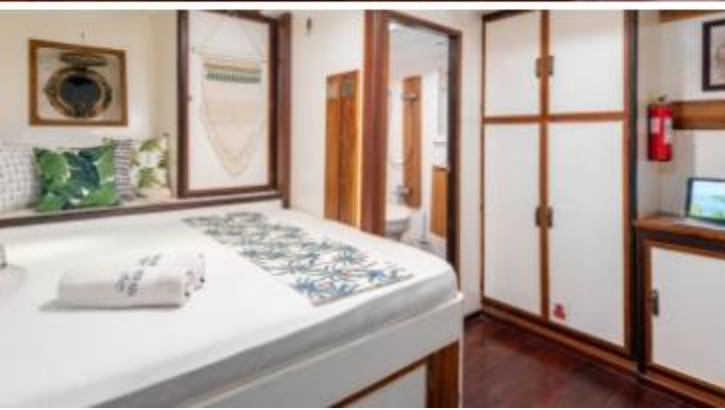
Flight delays are extremely frequent: please keep a minimum of 6 hours between 2 flights when flying in Indonesia. Wallacea dive Cruises will be in charge of your transfers from the closest airport to the boat before the departure of your cruise and return.

SEA HORSE: Boat specifications

8 air-conditioned Cabins with ensuite bathroom and hot water

- * 33 m x 8,5 m
- * 16 divers
- * 12 crew members - 4 dive guides - 1 cruise director-diving instructor

- * 5 cabins with TWIN beds, lower deck
- * 1 cabins with DOUBLE bed + 1 TWIN bed, lower deck
- * 2 cabins with DOUBLE bed "Sea view", main deck









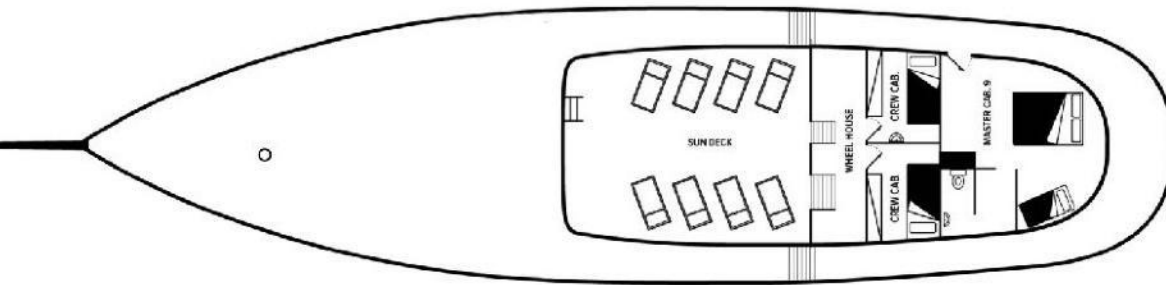




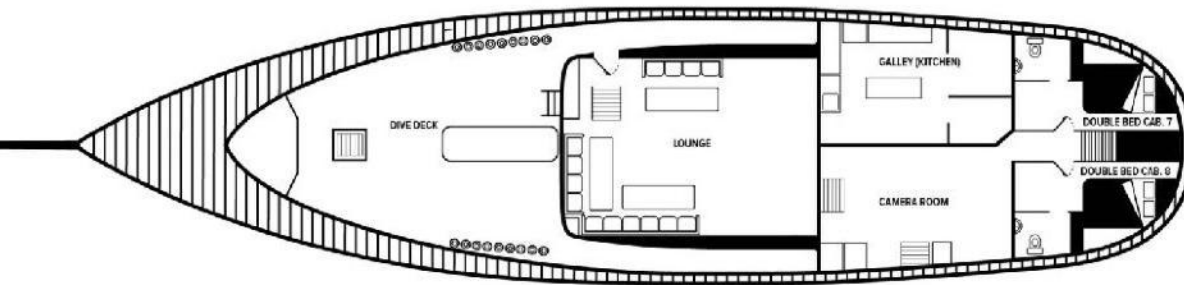


Layout of the Boat

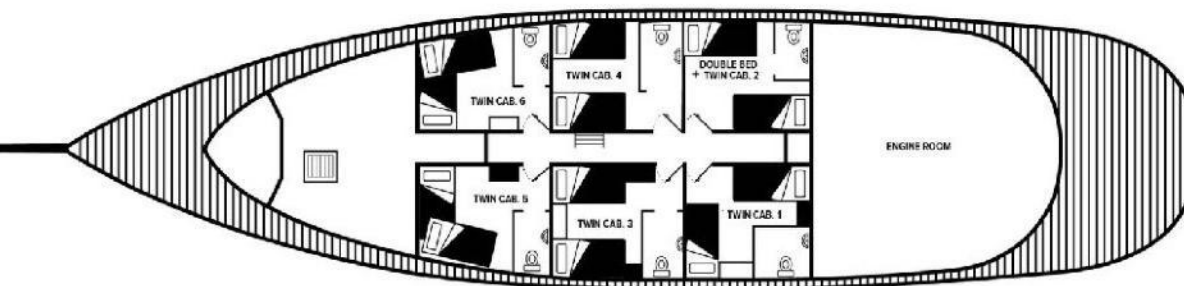
UPPER DECK



MAIN DECK



LOWER DECK



The team at your service

12 crew members
4 dive guides
1 skipper / diving instructor

Technical part

Engine:	M.A.N. 2866 LXE Marine Turbo Diesel
400 HP	
Generators:	1 x Mitshubishi 40 KVA 220-380 v 1 x Mitshubishi 60 KVA 220-380 v 1 x Yammar 22 KVA 220-380 v
Fresh water:	11,000 litres of fresh water storage, 6,000 litre
Compressors :	2x Bauer Mariner HP breathing air compressors 1x CompAir Low pressure Screw Compressors with membrane for NITROX
Navigation:	EPIRB emergency locator,, Furuno 90 NM radar, 2 x GPS w/Plotter and Depth Sounder Furuno
Communication:	Sat-phone, FM & SW Radio, 4 VHF and SSB Radio
Dinghies:	Two 6.5 meter Aluminium boats equipped with 100 HP Yamaha 4 strokes engines, VHF radios and depth sounders

Diving organisation on MSY SEAHORSE

Number of dives (minimum 30)

- No diving the day of departure
- 3 dives / day every day of the cruise - one dive is usually sacrificed for land excursion to Wayag-, and another one eventually for the Bird of paradise excursion.
- 6 Night dives.
- 1 dive the day before disembarking, maybe 2 according to your flight schedule (24h/No FLY).

Schedule & standards

- 1st dive:.....07:00am
- 2nd dive: 10:30am
- 3rd dive:02:30pm
- Night dive: 06:30pm
- Dive time: 60 minutes
- Maximum Depth : 35 meters
- Dives into the safety curves
- Bearing systematic security

Due to the large number of dives and the remoteness of the location, we urge divers to stay within the safety curve, to comply with a maximum depth of 35 meters, and to systematically perform a safety stop.

Depending on the guests dive experience, aspirations (photography, macro, etc), and eventual use of nitrox (free for certified divers), the cruise director will arrange the diving groups. These groups are made up of four divers and a dive guide. The dive guides are rotating on a daily basis. Each diver is given a dive tank (DIN & INT available, no need for adapters) and a single location for the duration of the cruise.

A briefing will be conducted by the director of cruises or one of the guides before each dive. It will provide guidance on the site topography, depths, currents and potential hazards, as well as on marine life and the species represented.

The staff carries your tank between the MV Ambai and the dinghies and back. to the dinghies, tanks are disposed in slots and the guide will help you to gear just before to roll back for the dive. Identification books of flora and local fauna are available on board, and the dive guides or the skipper will always help you to identify the strange animal you just saw underwater!

* There are some dive equipment to rent on board: However, all sizes are not necessarily available, so please book for it before the cruise.

* Our cruises are open to divers Padi Advanced Level 2 or equivalent with at least 50 dives logged. Less experienced divers can also participate with a specific supervision that have to be arranged before the cruise.

* An insurance covering medical evacuation and diving accidents is highly recommended. We will request the participants to fill up on board a statement of fitness for the dive activities.

*We will ask you to carefully respect the fauna and flora: have adequate buoyancy to avoid touching the substrate or break any corals; do not touch the animals, do not collect anything; do not to harass wildlife to photography and moderate the number of flashes you impose on them. The use of gloves is not allowed.

*The divers should always carry a marker buoy.

*Thank you to read our rules of diving [here](#). By booking a cruise with Wallacea you agree with these few basic rules.

The cruise rate

Includes

- Accommodation in a shared twin or double cabin.
- All meals & snacks. Drinking water, soft drinks and hot drinks, espresso.
- All guided dives (1 guide / 4 divers maximum)
- Nitrox
- Aluminium tanks (12 lts), weights and belts
- Airport-boat transfers from/to the closest airport (departure and arrival).

Doesn't include

- Raja Ampat park and Port fees: 200 € (to be settled cash on board)
- International and domestic flights
- Double cabin "sea view" (supplement: 20€/night/pax)
- Alcoholic beverages (you can BYOB)
- Diving equipment rental (see pricing below)
- 100 cf (15 litre) tanks : 65 € / cruise
- Crew gratuities
- Massage

Good to know

- All extras are payable in cash on board. We can not receive payment by credit card.
- Currencies accepted on board: €, USD, CHF, IDR.
- Tipping: they reflect your level of satisfaction with the service on board. As an indication in the area , this is 5%-10% of the cruise rate.
- Provided on board: towels and toiletries, soap, shampoo and toothpaste.
- Electrical outlets round European type.
- Room for storage and loading photos / videos and accessory devices with many outlets. Taken in the cabins and bathrooms also. Hair dryer available on request.
- Available on board: rods and hooks in stainless, € 10
- 2 complimentary Kayaks

**YOUR PASSPORT VALIDITY MUST BE AT LEAST 6 MONTHS
AFTER THE SCHEDULED RETURN DATE**

ADDITIONAL INFORMATION

Plan to extend your journey after the cruise?

Our last project **TOMPOTIKA DIVE LODGE**, intimate resort in East Sulawesi is made for you!

6 bungalows by the sea and amazing dives!

**-10% on our packages if your stay is just before/
after your cruise !**



Visa

Since May 2016, nationals from 169 countries are dispensed of visa and can enter the Indonesian territory for a maximum of 30 days (not renewable). You can check the list of these countries by following this link

<http://www.topbali.com/indonesia-visa/>

Insurance

An insurance covering medical evacuation and diving accidents is compulsory. It will be requested upon arrival on board.

Check in - Check out

- Check in the day of the cruise start and check out at the end of it, before 1pm.

Diving equipment rental rate

• Complete regulator with octopus and pressure gauge	10€/ day
• BCD	10€/ day
• Wetsuit	10€/ day
• Torch	10€/ day
• Dive Computer	10€/ day
• Fins	5€/ day
• Diving mask	5€/ day

SCHEDULE CRUISES

NOV-APRIL
Raja-Ampat

APRIL-MAY
Halmahera

JUL
Wakatobi

AUG-SEP
Komodo

SEPT-OCT
Banda Sea

OCT- NOV
ROF- Triton Bay



To contact us

Mobile Serge: +62 812 8616 6630 (whatsApp / SMS)

Mobile Akim: +62 812 3933 2224 (whatsApp / SMS)

Mobile Jerome: +62 812 4494 2028 (whatsApp / SMS)

Skype: [live:info_635824](https://www.skype.com/user/info/635824)

Office Jakarta: +62 21 7500 577